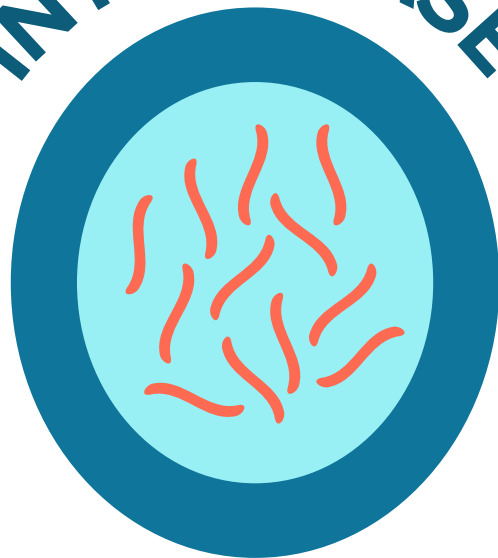


# STAGES

*of a*

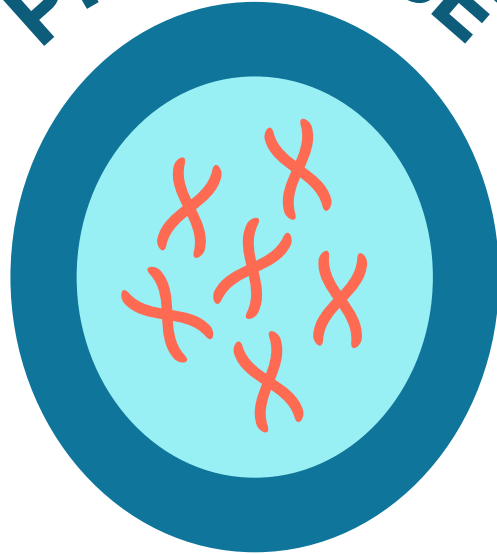
# CELL

## INTERPHASE



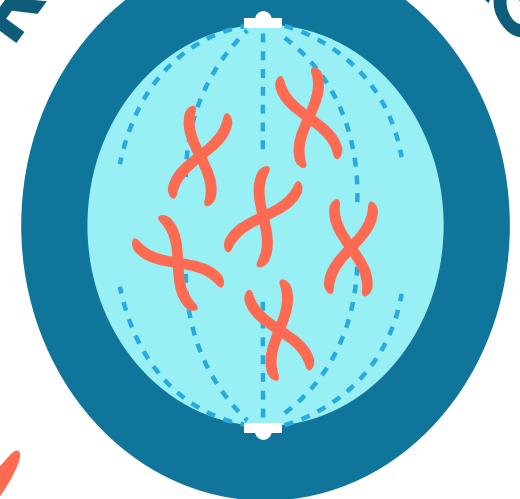
The cell is born with 46 chromosomes.

## PROPHASE



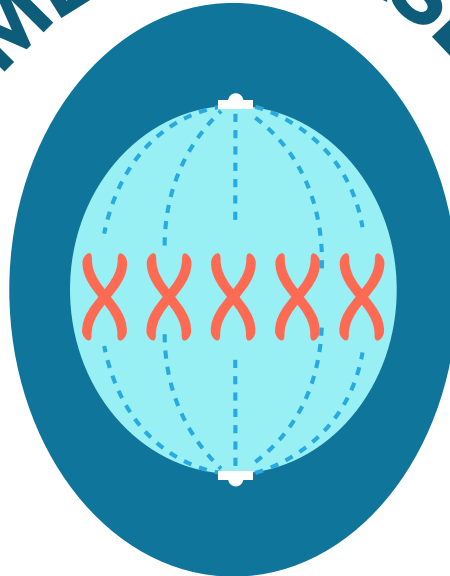
Chromosomes double in number, stopping at 92.

## PROMETAPHASE



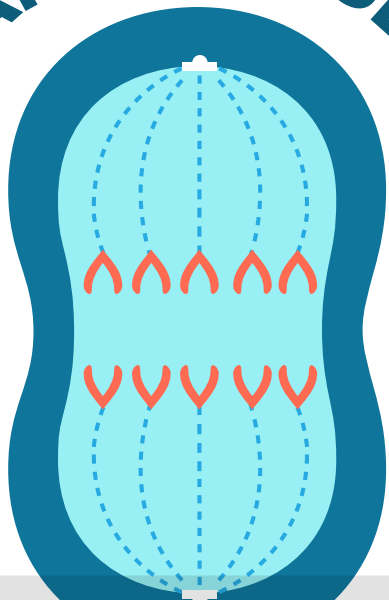
The cell's nuclear membrane dissolves. Cellular building blocks attach to the structure.

## METAPHASE



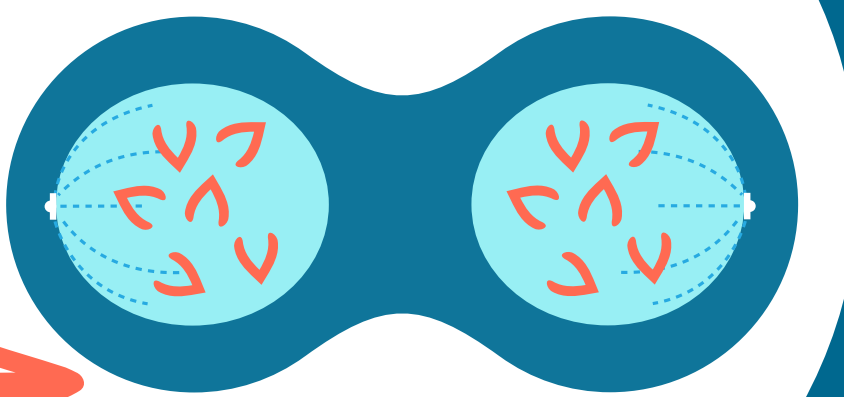
Chromosomes align to the middle of the cell.

## ANAPHASE



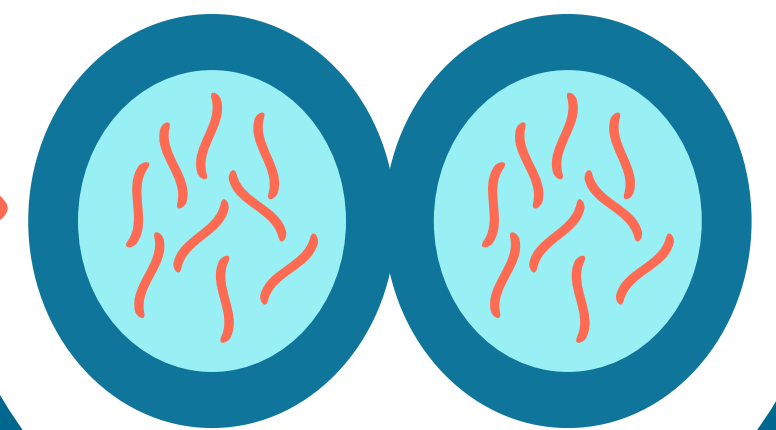
Chromosomes pull apart.

## TELOPHASE



Cellular division begins.

## CYTOKINESIS



Two new cells form.